

Let's Talk:

The Côte Gold Project Community Newsletter

A message from IAMGOLD President and CEO Gordon Stothart

Today, we made the exciting announcement that we will proceed with construction of the Côte Gold Project.

Côte will have a transformative impact on IAMGOLD and become an industrial cornerstone of the northern Ontario community of Gogama and surrounding areas. IAMGOLD has been working diligently on the Côte Gold Project for over 8 years. We have been working hard to move the Project forward over the past year and half, since the Feasibility Study was completed. We have continued exploring in the region and are excited by the discovery of the new Gosselin Zone.

Since joining on us on this Project in 2017, Sumitomo Metal Mining Co. have been enthusiastic and diligent joint venture partners. With our shared principles and values we expect this to be a long and profitable partnership.

We have also built a robust consultation framework with our First Nation partners: Mattagami First Nation and Flying Post First Nation. Over the years the Côte Project team and our First Nation partners have worked together to ensure that, along with the risks we are taking on this Project, there are also rewards. Our commitments to each other are based on trust, respect and transparency. We have laid solid foundations that will foster collaboration, to the benefit of all, well into the future.

We are grateful for the support from communities in Timmins, Sudbury and Gogama. Like you, we are excited about what this Project will bring and are looking forward to working together and embracing these opportunities.

Education and economic opportunities for our communities are important to us. We already have strong ties to Laurentian University and expect to develop additional relationships like this in northern Ontario.

The hardship caused by the COVID-19 pandemic has been felt differently by everyone. It is our hope that this Project will go some way to help lift the region economically. For IAMGOLD, and the many contractors and suppliers working with us, this Project is an opportunity to regain some ground.

At Côte, we will embrace technology and move beyond the traditional models of mining. We will enable greater transparency, flexibility and adaptability. The Côte Gold Project is designed to employ the latest technology in automated trucking and drilling, joining the ranks of other world class mines.

Côte is a transformative project on many fronts – to the Company, to our communities, First Nation and joint venture partners, our current and prospective employees, and local businesses. We welcome you warmly to join us as we embark on the journey to build Côte Gold!

P. Gordon Stothart
President and Chief Executive Officer
IAMGOLD Corporation



What is the Côté Gold Project and who is IAMGOLD?

The Côté Gold Project is a mining project in northern Ontario.

Côté Gold is located approximately 20 km southwest of Gogama, 130 km southwest of Timmins and 200 km northwest of Sudbury. Current entrance to the site is 6 km west of Highway 144.

Once operational the Project will feature an open pit mine, an ore processing plant, a mine rock area, a tailings management facility, an accommodation complex, an administrative complex and other related buildings and infrastructure.

The planned open pit will be approximately 1,600 meters long and 1,250 meters wide with an ultimate depth of 500 metres. Once operational it is expected the mine will process approximately 36,000 tonnes per day.

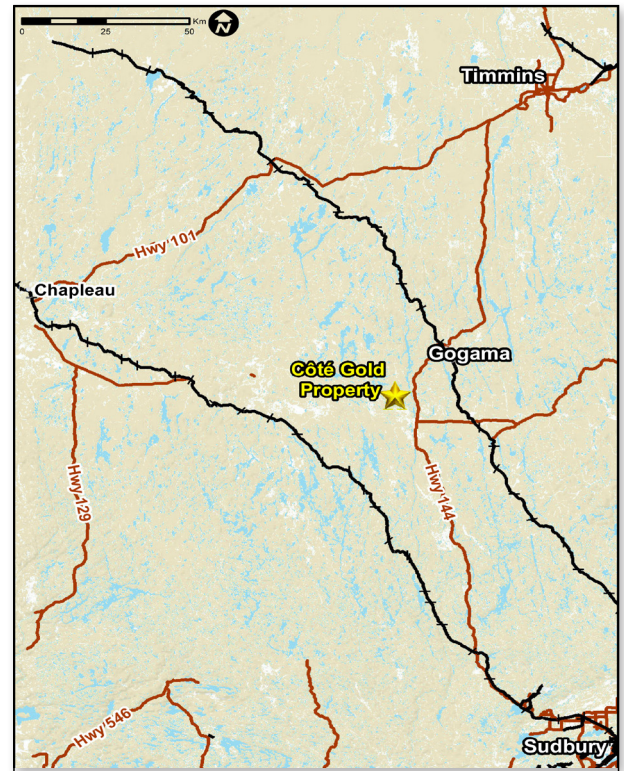
Côté Gold will be among the first mines in Canada to have an open pit serviced by autonomous haul trucks and drills.

The Côté Gold Project currently employs approximately 40 people throughout IAMGOLD offices. They are based at site, Sudbury, Toronto and Montreal. Recruitment will soon start for operations leadership.

IAMGOLD is a Toronto based gold mining company operating three gold mines on three continents. These are the Essakane mine in Burkina Faso, the Rosebel mine in Suriname and the Westwood mine in Canada.

IAMGOLD is developing the Boto Gold Project in Senegal and has greenfield and brownfield exploration projects in various countries in West Africa and the Americas.

IAMGOLD is committed to maintaining its culture of accountable mining through high standards of Environmental, Social and Governance practices. The company employs approximately 5,000 people.



The Côté Gold Project (the Project) is a proposed open pit gold mine that is located approximately 20 km southwest of Gogama and 130 km southwest of Timmins. The Project is a joint venture between IAMGOLD and Sumitomo Metal Mining Co.

Current contractors and suppliers

Wood Canada is the Engineering, Procurement and Construction Management (EPCM) contractor and is responsible for managing the bid process for contracts.

Wood identifies potential contractors and issues expression of interests for a specific package, along with prequalification documents required. IAMGOLD is not publicly communicating business opportunities in the market. We rely on the invited contractors to contact their subcontractors and suppliers accordingly.

The following contractors are currently engaged by the Project:

Caron Equipment Inc.	Canadian Shield Consultants Agency Inc.
Flying Post Camp & Logistics	G4S Secure Solutions
Valard Construction LP Scott	Bell Canada
Steel Erectors Inc.	

IBA partners celebrate Project announcement

IAMGOLD acknowledges that the Project lies within Treaty 9 and the Traditional Territory in which Mattagami First Nation and Flying Post First Nation have historically used, and continue to use for traditional purposes, and are of environmental, cultural, economic and spiritual importance to the First Nation communities.

Since planning for the Côté Gold Project started in 2012, IAMGOLD has openly consulted with Mattagami First Nation and Flying Post First Nation on a wide range of environmental, social and technical aspects.

During planning and design, IAMGOLD listened to comments and concerns and incorporated suggestions into design changes. The knowledge and recommendations shared during the consultation process created a new, and superior optimised plan. The Project now has a smaller footprint, reduced environmental impact and longer sustainable mine life.

"The journey over the past 8 years has been insightful and productive. Our First Nation partners have been clear and open with us about their concerns, and we have been transparent about our intentions. I am very proud of the work we have done together to optimise the Project. We have built a robust framework which will guide us through the life of Côté Gold.

"We are all excited to get this Project underway. For IAMGOLD, Côté Gold is a transformational project. For our First Nation partners it presents unique opportunities that stretch well into the future," Gord Stothart President and CEO of IAMGOLD.



Members of Mattagami First Nation and Flying Post First Nation with representatives from IAMGOLD and Sumitomo Metal Mining Co. at a water ceremony and feast held in September 2019. The water ceremony was in honour of Côté Lake and to acknowledge the sacrifice being made for the Project to proceed.

"Our community is celebrating this announcement. This is the culmination of years of diligent work on both sides. Côté Gold will have a significant positive impact for future generations. There are considerable business development, education and training opportunities for our community and we are pleased we can move forward with these," Chief Chad Boissoneau, Mattagami First Nation.

"Since signing the IBA in 2019 we have been eagerly awaiting a Project decision and are extremely pleased it has arrived. We have an open and trusting dialogue with IAMGOLD and are excited about the opportunities it will create for our community. We already have contracts in place for construction and site preparation work and look forward to growing these opportunities," Chief Murray Ray, Flying Post First Nation.

A unique feature of the agreement between IAMGOLD and its IBA partners is the Socio-Economic Management and Monitoring Plan (SEMMP). This plan, presented at PDAC earlier this year, provides a structure to monitor and influence the social and economic impacts of the mine on its neighbouring communities.

It was co-designed, reflecting the collaborative nature and shared responsibility for managing socio-economic effects. The SEMMP is a living document owned by both IAMGOLD and the communities.

IAMGOLD has a Memorandum of Understanding in place with the Métis Nation of Ontario and is continuing negotiations towards a future agreement.

Employment at Côté Gold

IAMGOLD is seeking outstanding people who are interested in doing things differently. Côté Gold is not going to be a traditional mine. While our hiring focus will be on people who can bring specialized skills and experience, we are also seeking those who have a sincere curiosity for advances in mining technology.

Recruitment for operations roles at the Côté Gold Project will be a staged process. During the construction period (2020-2023) the workforce will be largely managed by EPCM contractor Wood, and subcontractors.

IAMGOLD’s hiring focus will start with the management team who will then develop and expand the different parts of the business as they operationalize throughout construction.

Roles directly related to the construction phase of the Project are advertised and managed by EPCM contractor Wood and the subcontractors who are awarded contracts.

The Côté Gold Project currently employs approximately 40 people throughout IAMGOLD offices.

In fall this year IAMGOLD will start recruiting for management roles. Once management is in place the focus can shift to mine operations roles, and these will start being advertised in late 2021.

In early 2022 processing plant roles will start being advertised. As different parts of construction are complete and commissioned, new roles will be created and filled. IAMGOLD expects to have finished most, if not all, hiring by 2023.

Throughout the recruitment process the types of jobs being advertised include:

- Supervisory roles
- Engineering and geology
- Various trades including electricians, millwrights and heavy-duty equipment mechanics, technicians
- Support and service roles in environment, HR, IT and finance.

When available, job descriptions for these roles and applicant instructions are on www.iamgold.com/cotegoldcareers.



Hiring timeline

What's next on site?

At the beginning of August, the Côté Gold Project will enter phase one of construction. This is expected to last 12 to 14 weeks.

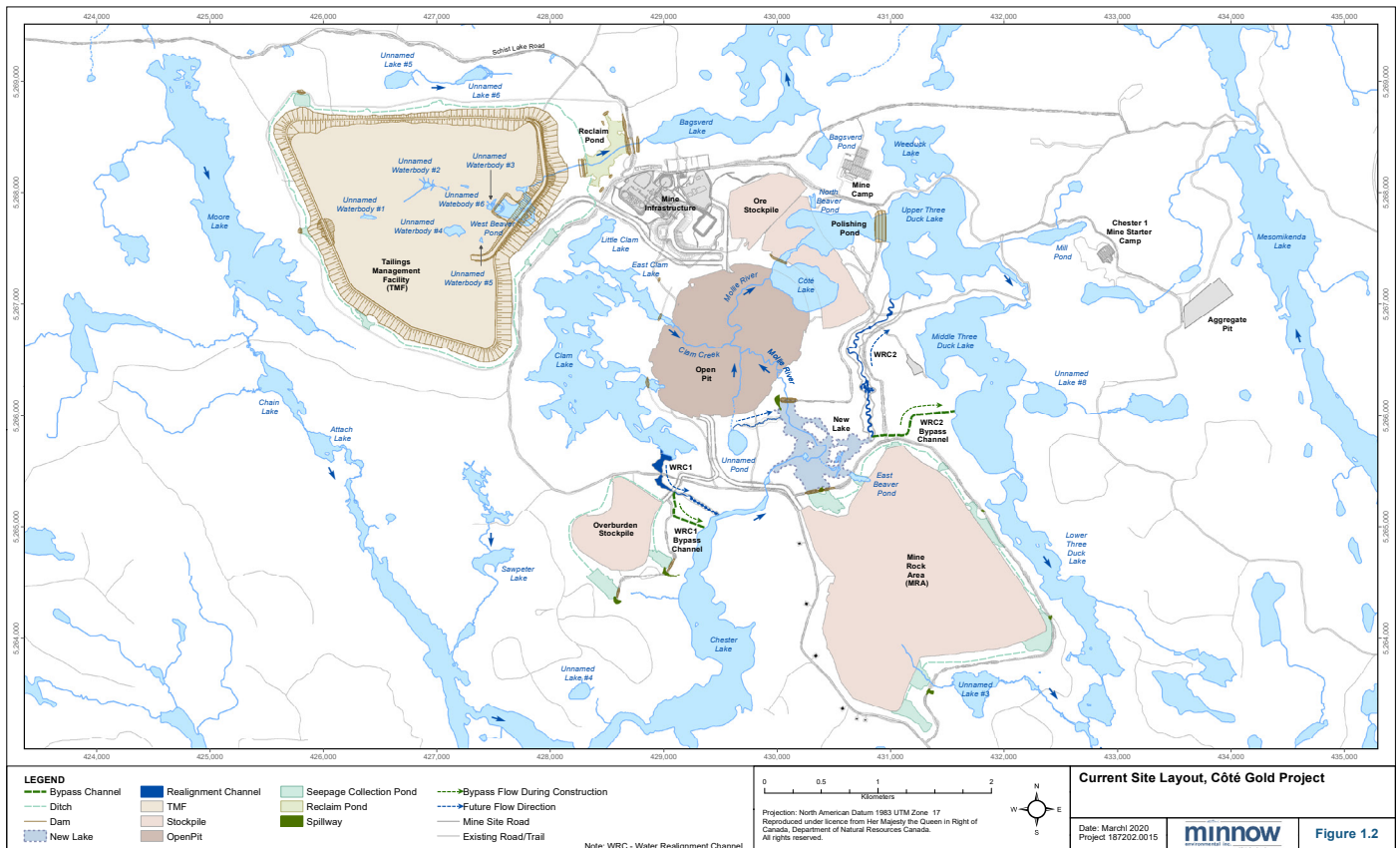
During this time the following tasks will be carried out:

- Chester Camp commissioning and start-up
- Camp pad earthworks preparation for camp construction
- Fish relocation in the Tailings Management Facility (TMF) area
- Road construction and upgrades.

There are expected to be between 30 and 80 workers on site over this time. Most workers will be bussed or driven to and from site by the contractors. No personal or visitor vehicles will be allowed on site and no parking will be provided. Workers will not be permitted to leave site while on rotation, this is part of our strict COVID-19 protocols.

In late fall construction and permanent camp installation starts. These are essential to the success of the Project and preparations for the plant site and major earthwork's contractors.

This winter we will take advantage of the cold season to excavate a deep organic material deposit in the TMF area and progress the plant site pad. In spring 2021 we will start the bulk of construction. This includes camp commissioning, major earthworks, site wide water management and plant construction.



Site map of the Côté Gold Project including Open Pit, Tailings Management Facility, Mine Rock Area and Process Plant.

COVID-19 protocols at Côté Gold

As the first phase of construction begins IAMGOLD and Wood PLC are enforcing strict COVID-19 protocols for all contractors coming on site.

All contractors on site must have a COVID-19 plan approved and reviewed before gaining access to site. The contractors are responsible for transporting their workforce to and from site. No personal or visitor vehicles are permitted to park on site and no parking is provided.

Our COVID-19 protocols include:

- pre-entry questionnaire and temperature check
- thermal imaging points throughout site
- social distancing measures
- strict protocol on the use of masks in various situations
- multiple hygiene and hand sanitation points throughout site.

In the camp, contractor workforces will be kept separate as much as possible.

As the COVID-19 situation evolves we are also expecting to change our protocols to ensure we keep workers safe and comply with Ontario government regulations.

Keeping our workers and community safe is a major focus. We are investing significant time and resources into ensuring we operate as safely as possible in this difficult environment.

We will enforce strict protocols and hold our contractors to those same standards.

More information is available on the Côté Gold COVID-19 protocols Q&A sheet on our website.



The COVID-19 screening unit, and staff in the screening process, currently in place at the Côté Gold Project site.

Permitting

Prior to a mine being constructed there are various permits required. The permitting process started in 2018 and will be ongoing.

Côté recently received approval for its application to amend Schedule 2 of the Metal and Diamond Mining Effluent Regulations under the *Fisheries Act*.

This approval allows the Côté Gold Project to start a fish relocation program this summer. This activity will continue each summer throughout construction.

Other permits that have been approved are the Closure Plan, Transmission Line – Environmental Study Report and Leave to Construct, Ontario Energy Board – Decision and Order to Vary, Phase 1 and 2 Forestry Resource License and Schedule 2 Amendment to the Metal and Diamond Mining Effluent Regulations.

Permits Received / Approved

Closure Plan

Transmission Line

- Environmental Study Report
- Leave to Construct

Ontario Energy Board – Decision and Order to Vary

Forestry Resource License

- Phase 1 Clearing (2019)
- Phase 2 Clearing (2020)

Metal and Diamond Mining Effluent Regulations

– Schedule 2 Amendment

- Gazette II publication: July 8, 2020

Fisheries Act Authorization under Section 35

- Fish Habitat Offsetting

Permits Submitted

Aggregate Permits – Category 9

Permits to Take Water

- Plant Site and other Construction Dewatering
- Clam Lake and Mollie River Realignment
- Domestic Water
- Open Pit Dewatering

Lakes and Rivers Improvement Act

- Tailings Management Facility Starter Dams
- Haul / Access Road
- Mollie Realignment
- Fish Habitat Offsetting Measures (Phase 1)

Environmental Compliance Approval

- Air and Noise
- Plant Site and other Construction Dewatering

Canadian Navigable Waters Act

- Major Works application for Clam Lake Dam #3
- Weeduck Reconnection and Water Realignment Channels
- Major Works application for Polishing Pond East Dam
- Major Works application for Clam Lake Reconnection

Permits to be Developed / Submitted

Environmental Compliance Approval

- Industrial Sewage Works and Domestic Sewage Treatment

Transmission Line Alignment



For more information please contact us: cotegold@iamgold.com

Join our Project mailing list to be kept informed about the Project and any upcoming events by sending an email to: cotegold@iamgold.com

Ce document est également disponible en français.